

Catalogo Generale



Ganci

Art. 50, Art. 50/A, Art. 50/B, art. 51, Art. 51/A, Art. 52, Art. 53	pag. 1
Art. 54, Art. 55, Art. 56, Art. 57, Art. 58, Art. 125	pag. 2
Art. 60, Art. 61, Art. 109, Art. 59, Art. 64, Art. 65	pag. 3
Art. 62, Art. 63, Art. 69, Art. 132, Art. 132/A, Art. 132/B, Art. 132/C, Art. 132/D	pag. 4
Art. 66, Art. 66/A, Art. 67, Art. 107, Art. 129, Art. 68, Art. 68/A, Art. 82	pag. 5
Art. 70, Art. 70/A, Art. 73, Art. 74, Art. 75, Art. 76, Art. 77, Art. 79, Art. 131	pag. 6

Carrucoline

Art. 81, Art. 83, Art. 89/A, Art. 104/A, Art. 105, Art. 150	pag. 7
---	--------

Carrucole

Art. 87/A, Art. 88/A, Art. 108	pag. 8
--------------------------------	--------

Accessori per macello

Art. 148, Art. 148/A, Art. 128/A, Art. 128/B, Art. 128/C, Art. 91, Art. 96, Art. 115	pag. 9
--	--------

Accessori per macelli e supermercati

Art. 78, Art. 78/A, Art. 78/B, Art. 98/1, Art. 98/A, Art. 98/B	pag. 10
Art. 71, Art. 110, Art. 119, Art. 119/A, Art. 119/B, Art. 119/C	pag. 11
Art. 102, Art. 103, Art. 137, Art. 182, Art. 117, Art. 118	pag. 12

Vassoi e contenitori

Art. 100, Art. 101, Art. 101/A, Art. 140, Art. 141, Art. 155	pag. 13
Art. 146, Art. 146/A, Art. 151, Art. 152, Art. 153, Art. 153/A	pag. 14
Art. 147, Art. 154, Art. 154/A, Art. 156, Art. 156/A, Art. 157	pag. 15

Seghetti

Art. 160, Art. 160/A, Art. 160/B, Art. 160/C, Art. 160/D, Art. 160/E, Art. 160/F	pag. 16
--	---------

Taglieri

Art. 120, Art. 72, Art. 72/A, Art. 159, Art. 159/A, Art. 183, Art. 183/A	pag. 17
--	---------

Carrelli

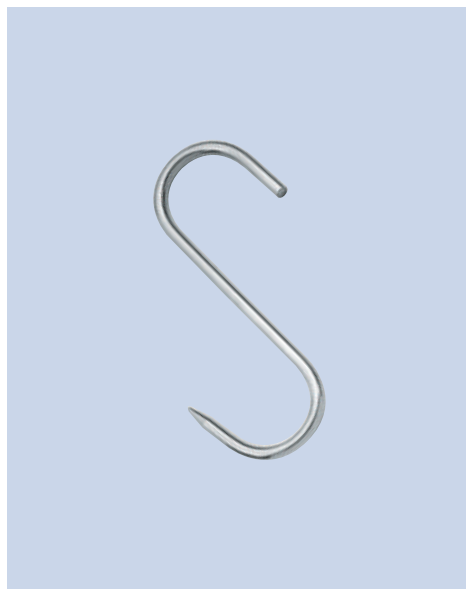
Art. 145/10, Art. 145/15, Art. 175, Art. 175/A, Art. 174, Art. 176	pag. 18
--	---------

Spiedini e tavoli

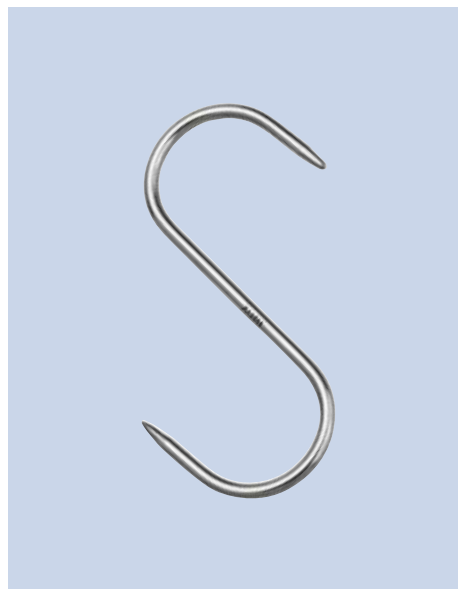
Art. 122, Art. 122/A, Art. 122/B, Art. 161, Art. 136, Art. 138, Art. 106/A	pag. 19
--	---------

Guidovie e gancere

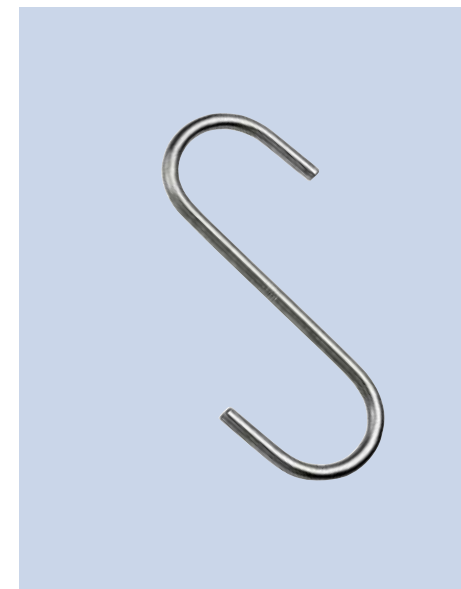
Art. 92, Art. 92/A, Art. 92/C, Art. 94, Art. 94/1, Art. 94/B,	pag. 20
---	---------



Art. 50
Gancio inox normale
1 punta, da mm.
*Stainless steel standard
hook 1 point,
sizes in mm.*
60 x 3
80 x 3
80 x 4
100 x 4
120 x 5
140 x 5
140 x 6
160 x 6
180 x 6
180 x 7
180 x 8
200 x 9
220 x 10
250 x 12
300 x 12
400 x 12
500 x 12
750 x 12
1000 x 12



Art. 50/A
Gancio inox normale
2 punte, da mm.
*Stainless steel standard
hook 2 points,
sizes in mm.*
60 x 3
80 x 3
80 x 4
100 x 4
120 x 5
140 x 5
140 x 6
160 x 6
180 x 6
180 x 7
180 x 8
200 x 9
220 x 10
250 x 12
300 x 12
400 x 12
500 x 12
750 x 12
1000 x 12



Art. 50/B
Gancio inox normale
senza punte, da mm.
*Stainless steel standard
hook without points,
sizes in mm.*
60 x 3
80 x 3
80 x 4
100 x 4
120 x 5
140 x 5
140 x 6
160 x 6
180 x 6



Art. 51
Gancio inox laterale
1 punta, da mm.
*Stainless steel side hook
1 point, sizes in mm.*
140 x 5
160 x 6
180 x 6
180 x 7
200 x 9

Art. 51/A
Gancio inox laterale
2 punte, da mm.
*Stainless steel side hook
2 points, sizes in mm.*
140 x 5
160 x 6
180 x 6
180 x 7
200 x 9



Art. 52
Gancio inox
per prosciutto da mm.
*Stainless steel
hook for hams,
sizes in mm.*
160 x 6
180 x 6



Art. 53
Gancio inox
girevole e snodato
con anello, da mm.
*Stainless steel
swivel and articulated
hook with ring,
sizes in mm.*
220 x 6
260 x 7
260 x 10
300 x 12



Art. 54

Gancio inox girevole da ambo le parti, da mm.

Stainless steel swivel hook on both sides, sizes in mm.

210 x 9
240 x 10
270 x 12
300 x 12
500 x 12



Art. 55

Gancio inox girevole con anello, da mm.

Stainless steel swivel hook with ring, sizes in mm.

180 x 6
210 x 9
240 x 10
240 x 12

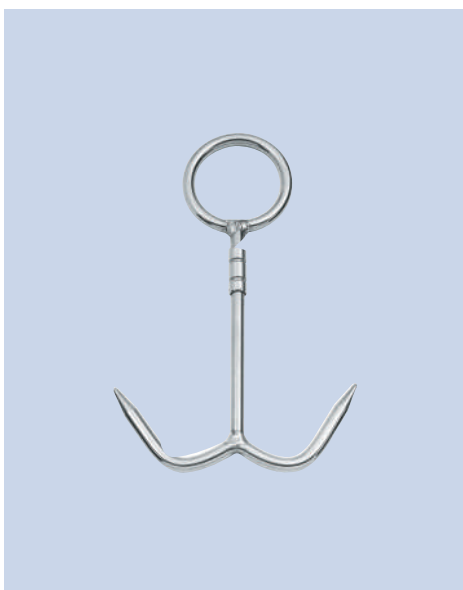


Art. 56

Gancio inox snodato con anello, da mm.

Stainless steel articulated hook with ring, size in mm.

160 x 6



Art. 57

Gancio inox girevole con anello a 2 prese, da mm.

Stainless steel swivel hook with ring and 2 hooks, sizes in mm.

180 x 6
200 x 9
200 x 10
230 x 12



Art. 58

Gancio inox girevole con anello a 4 prese, da mm.

Stainless steel swivel ring with 4 hooks, sizes in mm.

200 x 6
220 x 10
220 x 12



Art. 125

Gancio inox con anello saldato, da mm.

Stainless steel hook with welded ring, sizes in mm.

160 x 6
180 x 6



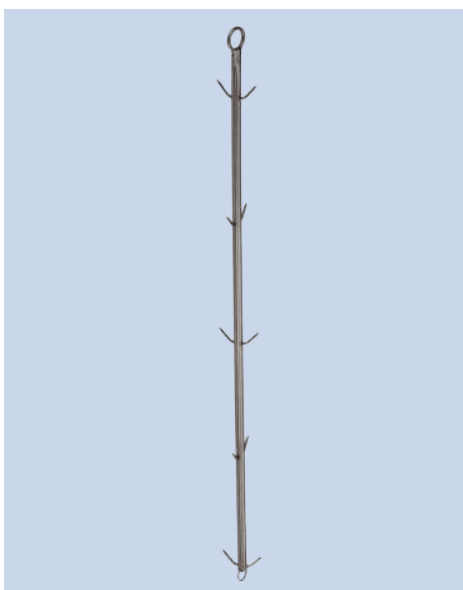
Art. 60
Gancio inox
4 prese per polli,
da mm.
*Stainless steel
hook with
4 hangers,
for poultry,
size in mm.*
160 x 6



Art. 61
Gancio inox girevole
4 prese per polli,
da mm.
*Stainless steel
swivel hook
with 4 hangers,
for poultry,
sizes in mm.*
220 x 6
220 x 10
220 x 12



Art. 109
Gancio inox
girevole 4 prese
per polli, da mm.
*Stainless steel
swivel hook
with 4 hangers,
for poultry,
sizes in mm.*
320 x 6
320 x 8



Art. 59
Grappolo inox 18/8
in tubolare,
per prosciutti,
da mm.
*18/8 stainless steel
tubular, ham hanger,
sizes in mm.*
1100 x Ø 22
con 8 ganci/with 8
hooks
1400 x Ø 22
con 10 ganci/with 10
hooks



Art. 64
Crocchiera girevole
inox 18/8
con 10 ganci,
da mm.
*18/8 stainless steel
revolving hanger
with 10 hooks,
sizes in mm.*
320 x 430 x 2
leggera/lightweight
320 x 430 x 3
rinforzata/reinforced

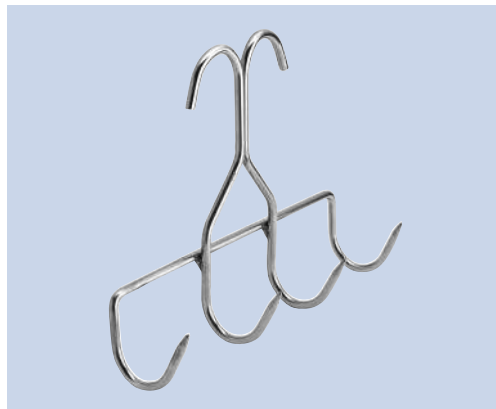


Art. 65
Stella girevole
inox per salumi,
da mm.
*Stainless steel
swivel star hanger,
sizes in mm.*
220 x 400 x 9
270 x 500 x 10
270 x 600 x 12



Art. 62

Gancio inox appendi pancetta a 3 prese, da mm.
Stainless steel bacon hanger with 3 hooks, size in mm.
180 x 6



Art. 63

Gancio inox appendi pancetta a 4 prese, da mm.
Stainless steel bacon hanger with 4 hooks, sizes in mm.
180 x 6
240 x 6



Art. 69

Gancio inox appendi pancetta riversato a 4 prese, da mm.
Stainless steel reverse bacon hanger with 4 hooks, sizes in mm.
180 x 6
240 x 6



Art. 132

Gancio inox 18/8 appendi pancetta riversato a 4 prese, da mm.
18/8 stainless steel reverse bacon hanger with 4 hooks size in mm.
160 x 4



Art. 132/A

Gancio inox 18/8 appendi pancetta a 4 prese, manico gigante, da mm.
18/8 stainless steel bacon hanger with 4 hooks, giant handle, size in mm.
160 x 4



Art. 132/B

Gancio inox 18/8 appendi pancetta riversato a 3 prese con 2 ganci, da mm.
18/8 stainless steel reverse bacon hanger with 3 hooks with 2 handles, size in mm.
120 x 4



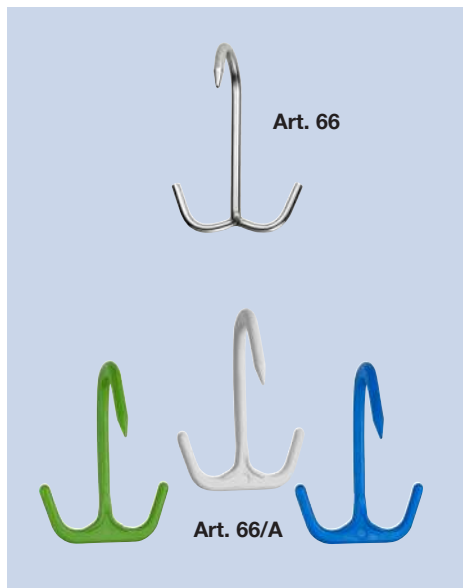
Art. 132/C

Gancio inox 18/8 appendi pancetta a 5 prese, da mm.
18/8 stainless steel bacon hanger with 5 hooks, size in mm.
200 x 5



Art. 132/D

Gancio inox 18/8 appendi pancetta riversato a 6 prese, da mm.
18/8 stainless steel reverse bacon hanger with 6 hooks, size in mm.
160 x 4



Art. 66
Gancio inox ad ancora con saldatura ad elettrodo, 1 punta, da mm.
Stainless steel anchor hook, with electrode welding, 1 point, size in mm.
130 x 7

Art. 66/A
Gancio ad ancora in nylon per alimenti, 1 punta, colori disponibili: verde, bianco, azzurro, da mm.
Nylon anchor hook for food, 1 point, available colors: green, white, light blue, size in mm.
130 x 7



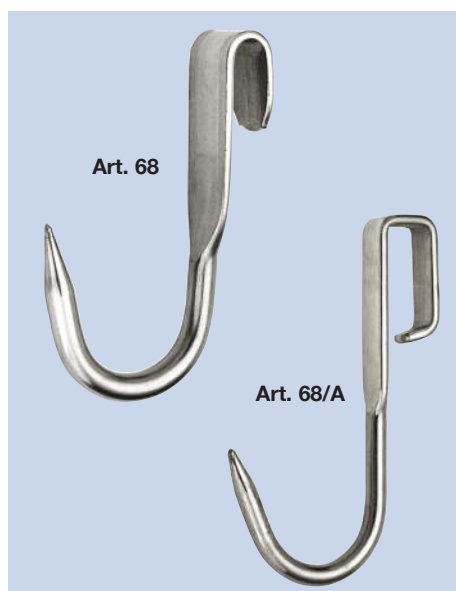
Art. 67
Gancio inox ad ancora con saldatura ad elettrodo, 3 punte, da mm.
Stainless steel anchor hook, with electrode welding, 3 points, sizes in mm.
120 x 6
130 x 7



Art. 107
Gancio inox ad ancora gigante 3 punte, da mm.
Stainless steel giant anchor hook, 3 points, size in mm.
300 x 18



Art. 129
Gancio inox girevole ad ancora, da mm.
Stainless steel swivel anchor type, sizes in mm.
210 x 9
240 x 10
270 x 12
300 x 12 mod. Export

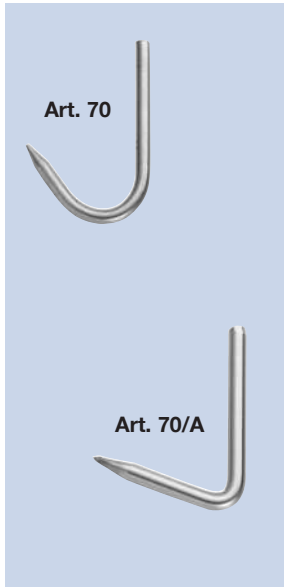


Art. 68
Gancio inox 18/8 scorrevole, da mm.
18/8 stainless steel sliding hook, sizes in mm.
100 x 6
120 x 9
140 x 12

Art. 68/A
Gancio inox 18/8 scorrevole chiuso, da mm.
18/8 stainless steel sliding and closed hook, size in mm.
100 x 7



Art. 82
Gancio inox girevole e scorrevole, da mm.
Stainless steel swivel sliding hook, size in mm.
270 x 12



Art. 70
Gancio inox 18/8
curvo per carrelli,
da mm.
(a richiesta
misure personalizzate)
*18/8 stainless steel
shaped hook for trolleys,
size in mm.
(special sizes
available on request)*
100 x 7

Art. 70/A
Gancio inox 18/8
piegato ad angolo
per carrelli, da mm.
(a richiesta
misure personalizzate)
*18/8 stainless steel
hook bent at an angle,
size in mm.
(special sizes
available on request)*
100 x 7



Art. 73
Gancio inox a corno
per gancera,
da mm.
*Stainless steel
horn-shaped hook
for rail, sizes in mm.*
100 x 10
170 x 15



Art. 74
Gancio inox a corno
per tubi, da mm.
*Stainless steel
horn-shaped hook
for pipes, sizes in mm.*
140 x 10
220 x 15



Art. 75
Gancio inox curvo
per gancera, da mm.
*Stainless steel
curved hook
for rail, sizes in mm.*
80 x 8
100 x 10
120 x 12



Art. 76
Gancio inox
curvo per tubo,
da mm.
*Stainless steel
curved hook
for pipe, sizes in mm.*
120 x 8
140 x 10
160 x 12
200 x 14



Art. 77
Gancio inox
per carrucola, da mm.
*Stainless steel
hook for pulley,
sizes in mm.*
120 x 12
150 x 15
180 x 18



Art. 79
Gancio inox a fungo,
da mm.
*Stainless steel
mushroom-shaped hook,
sizes in mm.*
140 x 12
160 x 12
160 x 14
160 x 15
180 x 18
200 x 18

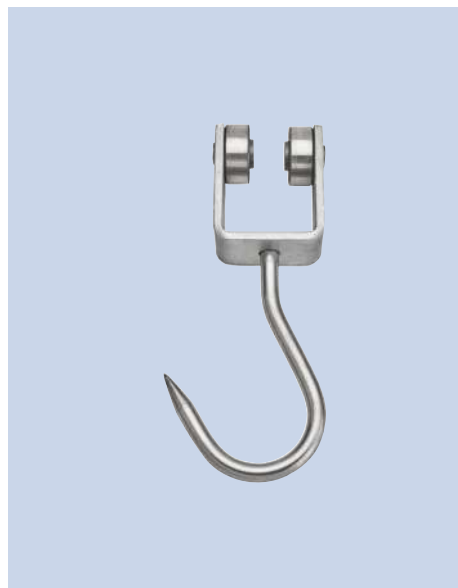


Art. 131
Gancio inox 18/8
a corno per pese,
da mm.
*18/8 stainless steel
horn-shaped hook,
for scales, size in mm.*
230 x 20

Carruoline



Art. 81
Carrucola zincata girevole e snodata per furgoni, da mm.
Zinc-plated swivel and articulated pulley for vans, size in mm.
180 x 12



Art. 83
Carrucolina zincata per trave, con cuscinetti, completa di gancio inox, da mm.
Zinc-plated ouley for beam, with bearings, complete with stainless steel hook, size in mm.
50 Ø 12



Art. 89/A
Carrucola zincata con fune e cuscinetto con appendi vitello inox, da mm.
Zinc-plated pulley with rope and bearing, stainless steel veal hanger, size in mm.
400 x 15



Art. 104/A
Gancio inox girevole e snodato per furgoni frigoriferi, con rondella in nylon, da mm.
Stainless steel swivel and articulated hook, for refrigerator van with nylon washer, size in mm.
200 x 12



Art. 105
Carrucola zincata girevole e snodata per furgoni, da mm.
Zinc-plated swivel and articulated pulley for vans, size in mm.
200 x 12



Art. 150
Carrucolina in nylon, con cuscinetti, girevole, snodata e gancio inox, da mm.
Nylon swivel and articulated pulley with bearings and stainless steel hook, size in mm.
240 x 12
Vedi pag. 20
Art. 92, 92/A, 92/C



Art. 87/A

Carrucola zincata con gancio inox, ruota Ø 80 con cuscinetto, da mm.
Zinc-plated pulley with stainless steel hook, Ø 80 wheel with bearing, sizes in mm.
 330 x 15 370 x 15 350 x 12 per suini/for pork



Art. 88/A

Carrucola zincata per guidovie da macelli con gancio inox girevole, ruota Ø 90 con cuscinetto, da mm.
Zinc-plated pulley for slaughter-house rails with swivel stainless steel hook, Ø 90 wheel with bearing, size in mm.
 400 x 18 (kg. 2,500)



Art. 108

Carrucola senza ruota per tubi zincata con gancio inox
 da kg. 1,000: piatto in ferro zincato mm. 25 x 12, gancio inox Ø 12 mm. 325, tubo Ø 60
 da kg. 1,450: piatto in ferro zincato mm. 35 x 12, gancio inox Ø 16 mm. 340, tubo Ø 60
 senza norme DIN
Zinc-plated pulley without wheel for tubes with stainless steel hook
kg. 1,000: flat galvanized iron mm.25 x 12, stainless steel hook Ø 12, mm. 325, Ø 60 tube
kg. 1,450: flat galvanized iron mm.35 x 12, stainless steel hook Ø 16, mm. 340, Ø 60 tube
 - without DIN

Accessori per macello



Art. 148
Gancio inox ad uncino con manico in plastica, da mm.
Stainless steel hook with plastic grip, size in mm.
165 x 7



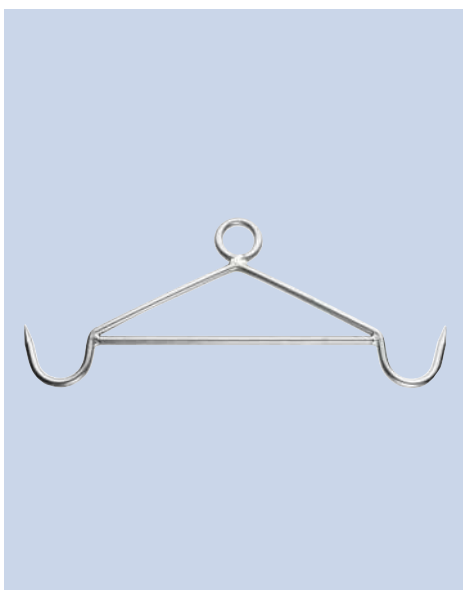
Art. 148/A
Gancio inox ad uncino con manico in alluminio, da mm.
Stainless steel hook with aluminium grip, size in mm.
165 x 7



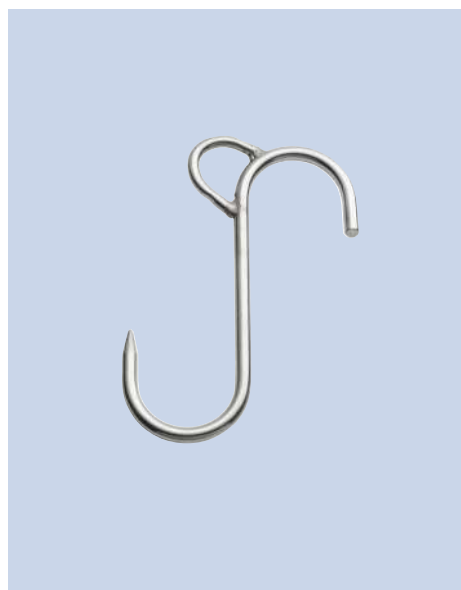
Art. 128/A
Campana inox con molla
Stainless steel scraper bell with spring

Art. 128/B
Campana inox senza molla
Stainless steel scraper bell without spring

Art. 128/C
Campana inox ovale senza molla
Stainless steel oval scraper bell without spring



Art. 91
Appendi suino inox con anello fisso, da mm.
Stainless steel pork hanger with fixed ring, size in mm.
H 250 x 550 Ø 12



Art. 96
Gancio inox per paranco con asola, da mm.
Stainless steel hook for hoist with slot, size in mm.
220 x 10



Art. 115
Gancio inox con anello per prolunga vari usi, da mm.
Stainless steel multi-purpose hook with ring for extension, size in mm.
500 x 12

Accessori per macelli e supermercati



Art. 78
Pungisalame in nylon per alimenti con spilli inox 18/8, completo di protezione (colori personalizzabili a richiesta quantità minima 2.000 pz.)
Nylon salami pricker for food with 18/8 stainless steel needles, with protective cover (personal colors on request minimum quantity 2.000 pcs)



Art. 78/A
Taglianervi professionale in polipropilene per alimenti con lame taglienti inox 18/8, completo di protezione, da mm.
(colori personalizzabili a richiesta quantità minima 2.000 pz.)
Professional nerve cutter in polypropylene for food with 18/8 stainless steel cutting blades, with protective cover, size in mm. (personal colors on request minimum quantity 2.000 pcs)
150 x 100



Art. 78/B
Taglianervi in nylon per alimenti con lame taglienti inox 18/8, completo di protezione (colori personalizzabili a richiesta quantità minima 2.000 pz.)
Nerve cutter in nylon for food with 18/8 stainless steel cutting blades, with protective cover (personal colors on request minimum quantity 2.000 pcs)



Art. 98/1
Batticarne monoblocco forgiato in acciaio inox Aisi 430, da
Stainless steel forged meat pounder, made of solid Aisi 430, weight
gr. 800
kg. 1
kg. 1,500
kg. 1,750
kg. 2
kg. 2,500



Art. 98/A
Batticarne inox a paletta tonda con manico piegato, da
Stainless steel meat pounder with round shovel and curved handle, weight
gr. 500
kg. 1



Art. 98/B
Batticarne inox a paletta quadra con manico piegato, da
Stainless steel meat pounder with square shovel and curved handle, weight
kg. 1



Art. 71

Formine inox 18/8
per dolci:
- serie cuore 3 pezzi
- serie rombo 3 pezzi
- serie savoiardo 5 pezzi
*18/8 stainless steel
cake tins:*
- 3 pcs heart set
- 3 pcs diamond set
- 5 pcs Savoy biscuit set



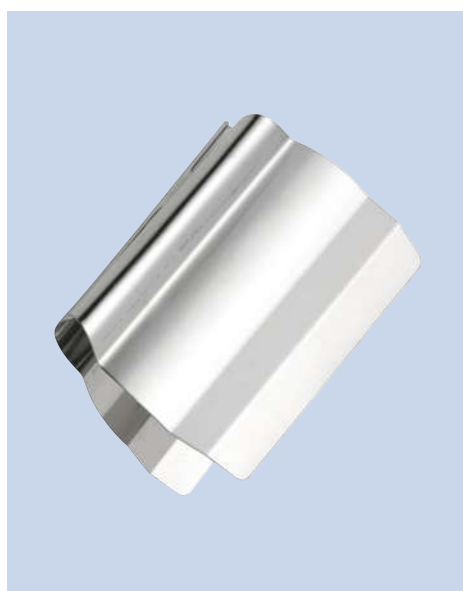
Art. 110

Segnaprezzo inox 18/8
con spilli,
completo di targhetta
in polipropilene,
da mm.
*18/8 stainless steel
price tag,
with polipropilene plate,
sizes in mm.*
70 x 60
100 x 80



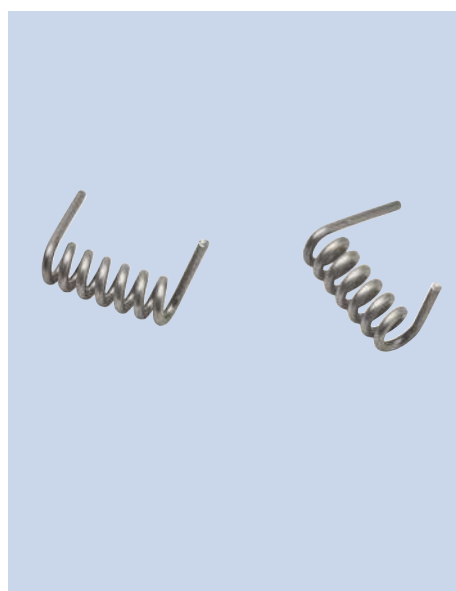
Art. 119

Pinza inox 18/8
per affettati
da mm.
*18/8 stainless steel
gripper for
sliced cold meats,
size in mm.*
105 x 55



Art. 119/A

Pinza inox 18/8
per affettati,
modello export,
da mm.
*18/8 stainless steel
gripper for
sliced cold meats,
export model,
size in mm.*
105x73



Art. 119/B

Molla di ricambio per
pinza
*Replacementspring for
gripper*



Art. 119/C

Pinza in nylon
per affettati,
disponibile nei colori:
bianco, rosso, nero
*Nylon gripper for
sliced cold meats,
available colors:
white, red, black*



Art. 102
Portaspago
inox 18/8 normale,
misura standard
*Stainless steel
string holder,
standard size*



Art. 103
Portaspago
inox 18/8 rinvato,
misura standard
*Stainless steel reverse
string holder,
standard size*



Art. 137
Portaspago
inox 18/8da banco
contagiaspago
incorporato,
misura standard
*Stainless steel
string holder
with built-in string cutter,
standard size*



Art. 182
Portaspago
inox 18/8da muro
contagiaspago
incorporato,
misura standard
*Stainless steel wall
string holder
with built-in
string cutter,
standard size*



Art. 117
Allonges inox 18/8
con 3 anelli tranciati,
da mm.
*18/8 stainless steel
allonges with 3 molded
rings, size in mm.*
170 x 6



Art. 118
Allonges inox 18/8
con 3 anelli incrociati,
da mm.
*18/8 stainless steel
allonges with 3 crossed
rings, sizes in mm.*
130 x 4
130 x 5

Vassoi e contenitori



Art. 100
Vassoio rettangolare inox 18/8 per macellerie da mm.
18/8 stainless steel rectangular tray, for butcher's shops, sizes in mm.
360 x 220 x 20
460 x 250 x 20



Art. 101
Contenitore inox 18/8 con griglia da mm.
18/8 stainless steel container with grille, sizes in mm.
260 x 230 x 55 260 x 230 x 70 320 x 230 x 55
320 x 230 x 70 350 x 240 x 55 350 x 240 x 70
410 x 310 x 55 410 x 310 x 70 500 x 350 x 55
500 x 350 x 70 610 x 410 x 55* 610 x 410 x 70*

* per Art. 145



Art. 101/A
Contenitore inox 18/8 senza griglia da mm.
18/8 stainless steel container without grille, sizes in mm.

260 x 230 x 55 260 x 230 x 70 320 x 230 x 55
320 x 230 x 70 350 x 240 x 55 350 x 240 x 70
410 x 310 x 55 410 x 310 x 70 500 x 350 x 55
500 x 350 x 70 610 x 410 x 55* 610 x 410 x 70*

* per Art. 145



Art. 140
Vassoio inox 18/8 spigolato per banchi frigo da mm.
18/8 stainless steel tray with sharp corners for cold counters, sizes in mm.:
290 x 210 x 20 290 x 300 x 20 400 x 300 x 20
480 x 210 x 20 580 x 210 x 20 580 x 400 x 20
680 x 210 x 20 680 x 300 x 20 730 x 250 x 20
800 x 300 x 20



Art. 141
Vassoio inox 18/8 per macellerie da mm.
18/8 stainless steel rectangular tray for butcher's shops, sizes in mm.:
260 x 230 x 20 320 x 230 x 20 350 x 240 x 20
410 x 310 x 20 500 x 350 x 20 610 x 410 x 30*

* per Art. 145



Art. 155
Vassoio rettangolare inox 18/8 da mm.
18/8 stainless steel rectangular tray, sizes in mm.

260 x 230 x 15 320 x 230 x 15 350 x 240 x 15
410 x 310 x 15 500 x 350 x 15 610 x 410 x 15*

* per Art. 145



Art. 146

Tramoggia inox 18/8 per tritacarne, con attacco esterno saldato con puntatrice da mm.:

18/8 stainless steel container for meat mincer with outer spot-welded fitting, sizes in mm.

260 x 230 x 55
260 x 230 x 70
320 x 230 x 55
320 x 230 x 70
350 x 240 x 55
350 x 240 x 70
410 x 310 x 55
410 x 310 x 70
500 x 350 x 55
500 x 350 x 70
610 x 410 x 55
610 x 410 x 70



Art. 146/A

Tramoggia inox 18/8 per tritacarne, completa di salvamano con attacco esterno saldato con puntatrice da mm.:

18/8 stainless steel container for meat mincer with hand guard with outer spot-welded fitting, sizes in mm.

260 x 230 x 55
260 x 230 x 70
320 x 230 x 55
320 x 230 x 70
350 x 240 x 55
350 x 240 x 70
410 x 310 x 55
410 x 310 x 70
500 x 350 x 55
500 x 350 x 70
610 x 410 x 55
610 x 410 x 70

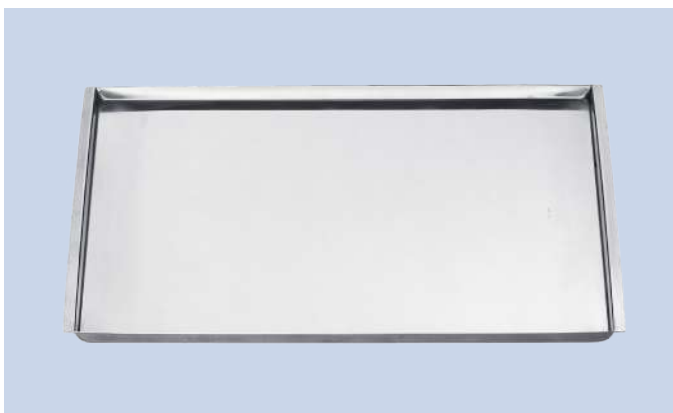


Art. 151

Vassoio rettangolare inox 18/8 a cassetta da mm.

18/8 Stainless steel rectangular tray, sizes in mm.

180 x 110 x 15	280 x 200 x 15	280 x 290 x 15
350 x 240 x 15	390 x 290 x 15	570 x 200 x 15
570 x 390 x 15	670 x 200 x 15	670 x 290 x 15
790 x 290 x 15		

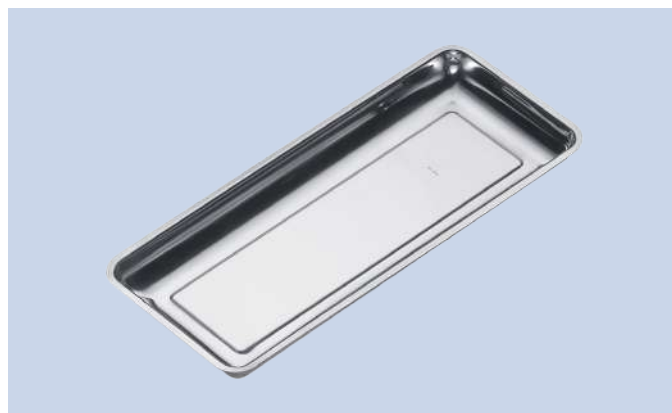


Art. 152

Vassoio rettangolare inox 18/8 a cassetta con maniglie da mm.

18/8 stainless steel rectangular tray, with handle, sizes in mm.

200 x 110 x 15	300 x 200 x 15	300 x 290 x 15
370 x 240 x 15	410 x 290 x 15	590 x 200 x 15
590 x 390 x 15	690 x 200 x 15	690 x 290 x 15
810 x 290 x 15		

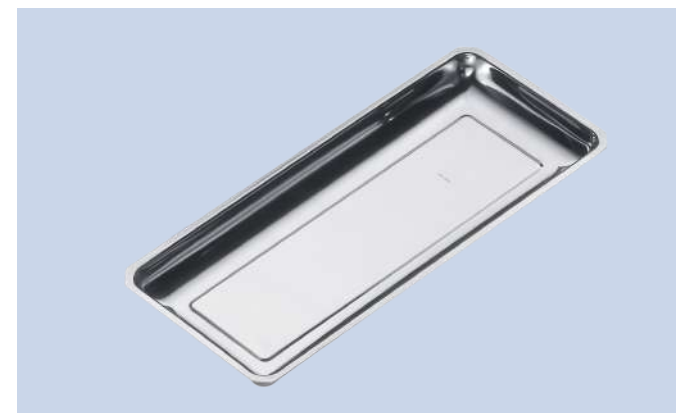


Art. 153

Vassoio rettangolare inox 18/8 con angolo arrotondato, da mm.

18/8 stainless steel rectangular tray, with rounded corner, size in mm.

450 x 190 x 35



Art. 153/A

Vassoio rettangolare inox 18/8 con angolo tagliato da mm.

18/8 stainless steel rectangular tray, with cut corner, size in mm.

450 x 190 x 35



Art. 147

Vassoio inox 18/8 multiuso da mm.

18/8 Stainless steel multi-purpose tray, sizes in mm.

190 x 120 x 15	290 x 210 x 15	290 x 300 x 15
360 x 250 x 15	400 x 300 x 15	480 x 210 x 15
580 x 210 x 15	580 x 400 x 15	680 x 210 x 15
680 x 300 x 15	800 x 300 x 15	



Art. 154

Vassoio rettangolare inox 18/8 con spigolo da mm.

18/8 stainless steel rectangular tray,

with sharp edge, sizes in mm.

270 x 200 x 15
450 x 190 x 15



Art. 154/A

Vassoio rettangolare inox 18/8 senza spigolo da mm.

18/8 stainless steel rectangular tray, without sharp edge, sizes in mm.

270 x 200 x 15
450 x 190 x 15



Art. 156

Contenitore inox 18/8 per pesce con fori da mm.

18/8 stainless steel fish container with holes, size in mm.

270 x 200 x 45



Art. 156/A

Contenitore inox 18/8 da mm.

18/8 stainless steel container size in mm.

270 x 200 x 45



Art. 157

Vassoio rettangolare inox 18/8 da mm.

18/8 stainless steel rectangular tray, size in mm.

270 x 200 x 20

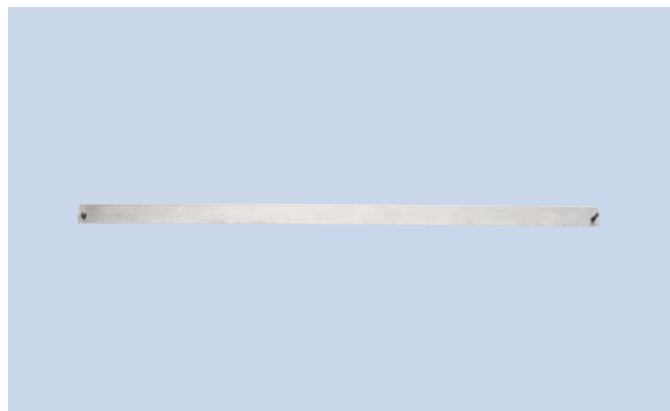


Seghetti



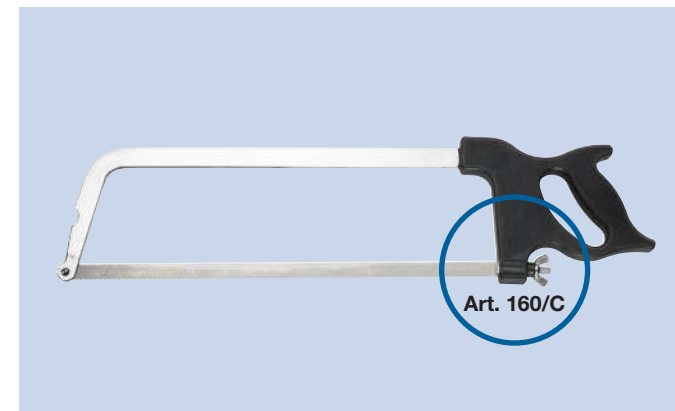
Art. 160

Seghetto modello Lonatini in acciaio inox 18/8 a fissaggio rapido da mm.:
18/8 stainless steel saw quick-fit, sizes in mm.:
300 - 350 - 400 - 450 - 500 - 550 - 600



Art. 160/A

Lama modello Lonatini per seghetto a fissaggio rapido e a vite da mm.:
Narrow blade Lonatini model for quick-fit and screw saw, sizes in mm.:
300 - 350 - 400 - 450 - 500 - 550 - 600



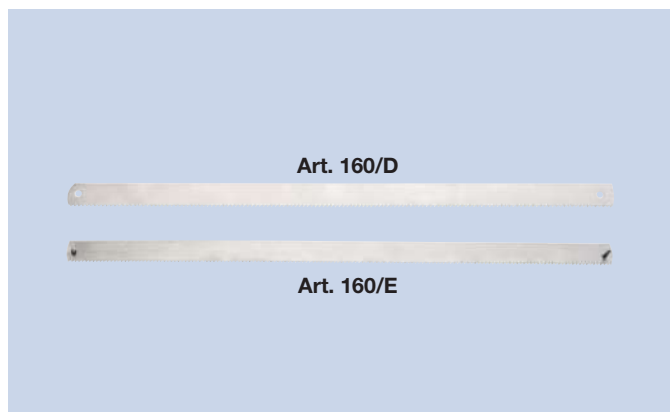
Art. 160/B

Seghetto modello Lonatini in acciaio inox 18/8 a vite da mm.:
18/8 stainless steel screw saw, sizes in mm.:
300 - 350 - 400 - 450 - 500 - 550 - 600



Art. 160/C

Vite di ricambio per seghetto art. 160/B
Replacement screw for saw art. 160/B



Art. 160/D

Art. 160/E

Art. 160/D

Lama per seghetto a vite, con fori, modello vecchio, da mm.:
Blade for screw saw, with holes, old model, sizes in mm.:
400 - 450 - 500 - 550 - 600

Art. 160/E

Lama per seghetto a fissaggio rapido, modello vecchio, da mm.:
Blade for quick-fit saw, old model, sizes in mm.:
400 - 450 - 500 - 550 - 600



Art. 160/F

Vite di ricambio per seghetto a vite, modello vecchio.
Replacement screw for old model saw

Taglieri



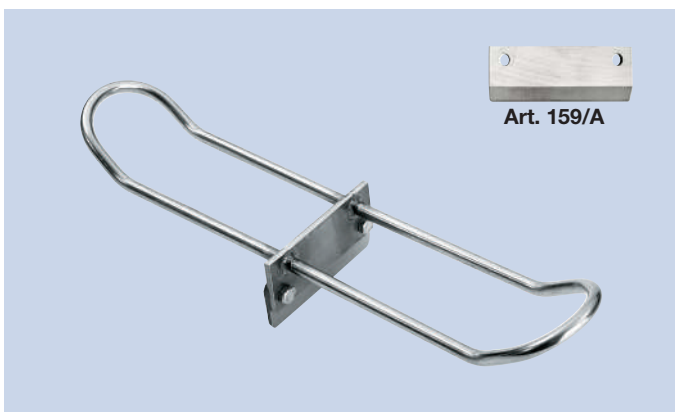
Art. 120
Punteruoloinox con manico plastica, punta quadra da mm.:
Stainless steelpricker with plastic handle, square point, size in mm.:
300 x 6



Art. 72
Morsa inox 18/8 per prosciutto con base in legno di faggio (mm. 450 x 270 x H30),
ingombro totale mm.:
*18/8 stainless steel vice for ham with beech wood base (mm. 450 x 270 x H30), overall
dimensions in mm.:*
590 x 270 x H155



Art. 72/A
Morsa inox 18/8 per prosciutto con base in polietilene (mm. 380 x 230 x H20),
ingombrototale mm.:
*18/8 stainless steel vice for ham with polyethylene base (mm. 380 x 230 x H20),
overall dimensions in mm.:*
590 x 230 x H145

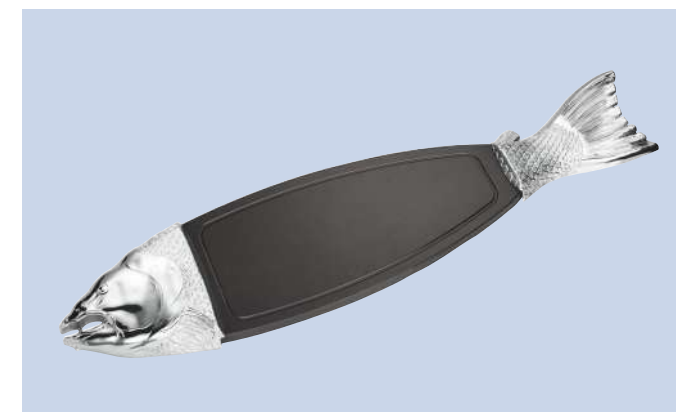


Art. 159
Raschietto inox 18/8 per ceppi con lama
intercambiabile
*18/8 stainless steel scraper with
interchangeable blade for choppingblocks*

Art. 159/A
Lama di ricambio per raschietto
*Replacement stainless steel blade for
scraper*



Art. 183
Tagliere salmone in polietilene color bianco, con inserti testa coda cromati, ingombro totale:
*White polyethylene cutter board salmon with chrome trim tail head,
overall dimensions mm.:*
900 x 200



Art. 183/A
Tagliere salmone in polietilene color nero, con inserti testa coda cromati, ingombro totale:
*Black polyethylene cutter board salmon with chrome trim tail head,
overall dimensions mm.*
900 x 200



Art. 145/10

Carrello inox 18/8 portavassoi a 10 vani completo di 4 maniglie plastica, 2 ruote inox girevoli diam. 100 con freno, 2 ruote inox girevoli diam. 100 normali. Ingombro mm.: *Stainless steel trays trolley, with 10 compartments*

Art. 145/15

Carrello inox 18/8 portavassoi a 15 vani completo di 4 maniglie plastica, 2 ruote inox girevoli diam. 100 con freno, 2 ruote inox girevoli diam. 100 normali. Ingombro mm.: *Stainless steel trays trolley, with 15 compartments*

I carrelli utilizzano:

The trolley use:

Art. 101 610 x 410 x 55

Art. 101 610 x 410 x 70

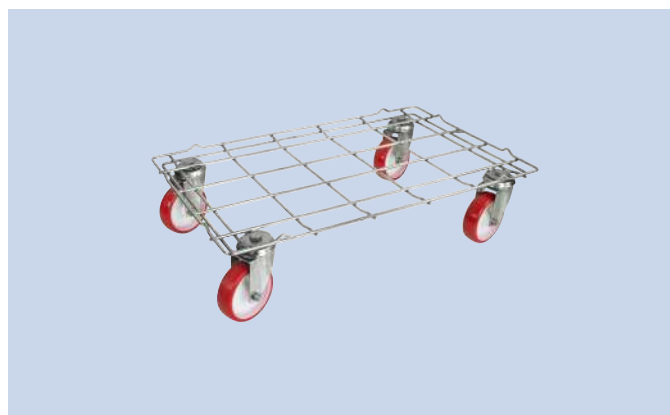
Art. 141 610 x 410 x 30

Art. 155 610 x 410 x 15



Art. 175

Pianetta in nylon grigliata completa di ruote girevoli in nylon Ø 100 con supporto zincato da mm.: *Nylon shelf with grid, complete with swivel castors of nylon Ø 100 with galvanized support, size in mm.:*



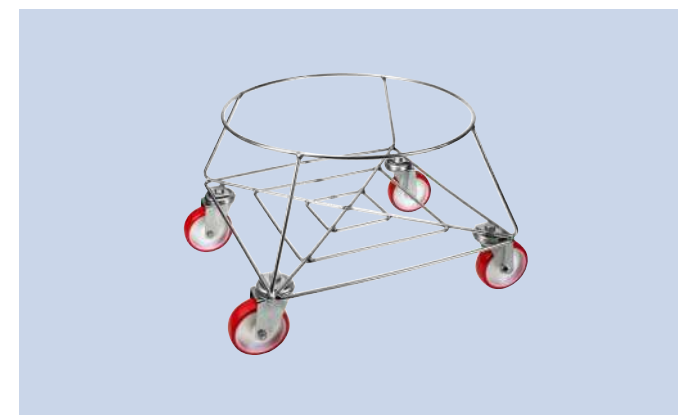
Art. 174

Pianetta in filo inox 18/8, completa di ruote girevoli in nylon Ø 100 con supporto inox 18/8 da mm.: *18/8 stainless steel shelf wire, complete with swivel castors of nylon Ø 100 with 18/8 stainless steel support, size in mm.:*



Art. 175/A

Pianetta in nylon con foro centrale completa di ruote girevoli in nylon Ø 100 con supporto zincato da mm.: *Nylon shelf with hole in the middle, complete with swivel castors of nylon Ø 100 with galvanized support, size in mm.:*



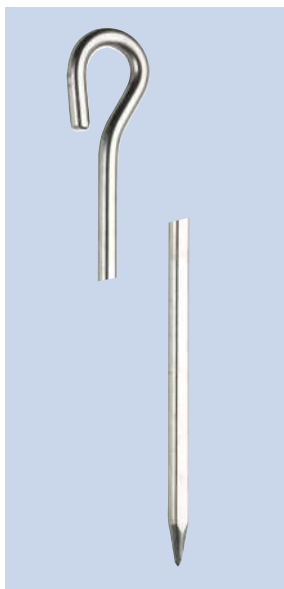
Art. 176

Portabidone in filo inox 18/8 completo di ruote girevoli in nylon Ø 100 con supporto inox 18/8 da mm.: *18/8 stainless steel binframewire, complete with swivel castors of nylon Ø 100 with 18/8 stainless steel support, size in mm.:*

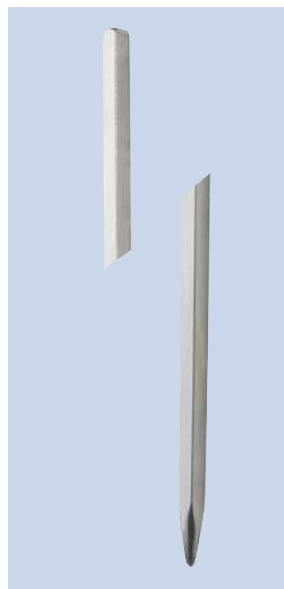
450 x 450 x h340 Ø cerchio/round 420

450 x 450 x h340 Ø cerchio/round 530

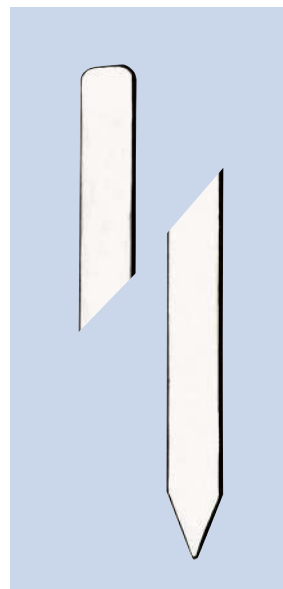
Spiedini e tavoli



Art. 122
Spiedino inox con anello, da mm.
Stainless steel skewer, with ring, sizes in mm.
100 x 3
150 x 3
150 x 4
200 x 3
200 x 4
250 x 3
250 x 4
300 x 3
300 x 4
350 x 4



Art. 122/A
Spiedino inox 18/8 quadro, da mm.
18/8 stainless steel square skewer, sizes in mm.
5 x 5 x 500
5 x 5 x 600



Art. 122/B
Spiedino inox 18/8 piatto, da mm.
18/8 stainless steel plate skewer, sizes in mm.
2 x 14 x 500
2 x 14 x 600



Art. 161
Gruppo di 6 spiedini inox con decoro animali color oro, da mm.
Set of 6 stainless steel skewer with golden animal decorations, size in mm.
300 x 3



Art. 136
Tavolo da lavoro inox 18/8 con piano polietilene da mm. 20 e piedini antisdrucciolevoli, da mm.
18/8 stainless steel work table with polyethylene top mm. 20 and stainless steel non-slip feet, sizes in mm.
1200 x 700 x H 800 1500 x 700 x H 800 2000 x 900 x H 800



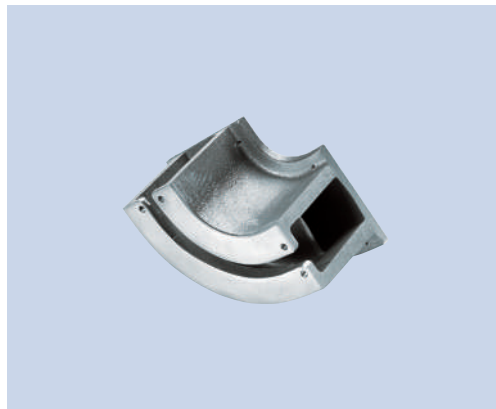
Art. 138
Ceppo inox 18/8 con piano polietilene da mm. 100 e piedini antisdrucciolevoli, da mm.
18/8 stainless steel chopping block with polyethylene top mm. 100 and stainless steel non-slip feet, sizes in mm.
400 x 400 x H 900
500 x 500 x H 900
600 x 600 x H 900



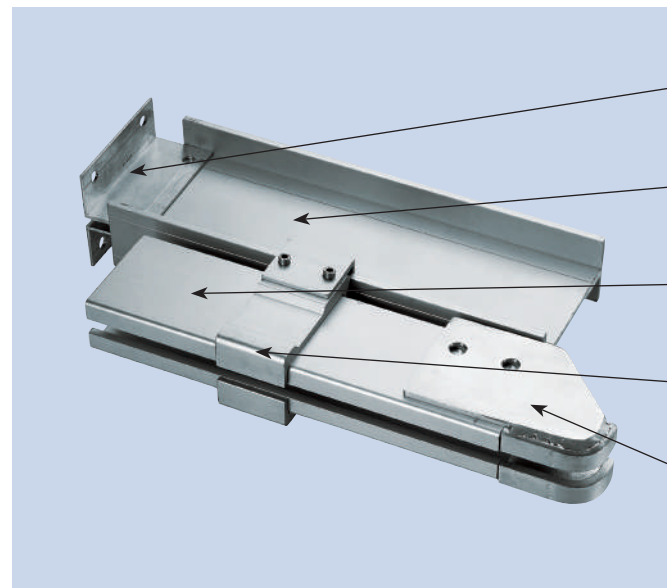
Art. 106/A
Piedino inox regolabile con gomma antisdrucciolevole., misura standard (filetto 12MA).
Adjustable stainless steel foot with non-slip rubber, standard size (12MA thread)



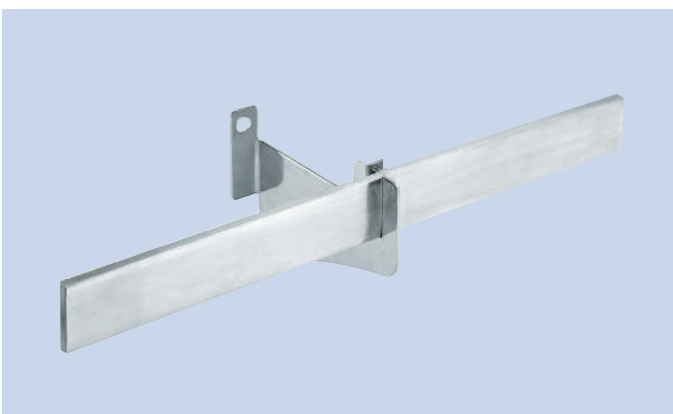
Art. 92
Scambio alluminio a 3 vie applicabile sulla guida via
3-way aluminium switch, can be fitted to the rail
*Art. 150 p. 7



Art. 92/A
Curva fusa in alluminio, applicabile sulla guida via
Cast aluminium curved section, can be fitted to the rail
*Art. 150 p. 7



Art. 92/C
Insero incastro trave
Beam insert
Trave mm. 140 x 66
Beam 140 x 66 mm
Guidovia mm. 100 x 50
Rail 100 x 50 mm
Cravatta per aggancio
Hooking tie
Innesto per carruoline
Pulluey coupling
*Art. 150 p. 7



Art. 94
Barra piatta in acciaio inox 18/8 da mm.
18/8 stainless steel flat bar, sizes in mm.
40 x 8
50x10



Art. 94/1
Barra piatta in alluminio con rilievo sagomato da mm.
Shaped aluminium flat bar, sizes in mm.
35x10
60x14



Art. 94/B
Mensola in acciaio inox 18/8 tranciata per barra piatta da mm.
18/8 stainless steel moulded bracket for flat bar, size in mm.
195 x 155

LONATINI S.R.L.



Nata nel 1961 per iniziativa di Giordano e Angelo Lonatini, originari di Polaveno, e con il nome di «Lonatini Giuseppe», svolgeva all'inizio attività di pulitura delle posate a cui si aggiunse (1966) la produzione di ganci inox per macellerie e pollerie. Successivamente (1969) il nome della ditta si trasforma in «Lonatini Giuseppe & Figli», mutato ulteriormente (1979) nell'attuale. Nello stesso anno la produzione già avviata si aggiunge anche la fabbricazione di impianti di guidovie per celle frigorifere. Due anni dopo, in coincidenza anche con il trasferimento nell'attuale sede, si amplia ulteriormente la produzione inserendo quella di vassoi e contenitori inox, tavoli da lavoro, scaffali e altri elementi di arredamento per macellerie e settori simili per i quali può essere ritenuta un'azienda all'avanguardia, non solo in campo nazionale. L'affermazione commerciale e la serietà professionale sono il risultato di un assiduo lavoro che per ben 37 anni tutti i sei fratelli con le rispettive famiglie hanno sviluppato con profonda intesa che ha consentito all'impresa di raggiungere gli attuali, lusinghieri traguardi. Nel 2023 la società inizialmente fondata si trasforma in S.R.L. amministrata e gestita dal socio Lonatini Eugenio e dal figlio Cristian Lonatini

Founded in 1961 by Giordano and Angelo Lonatini from Polaveno with the original denomination Lonatini Giuseppe, the company was originally set up to polish cutlery. In 1966 the company started manufacturing stainless steel hooks for meat and poultry shops. In 1969 the company changed its name to Lonatini Giuseppe & Figli, and finally to its current name in 1979. The same year saw the integration of a new line for the production of rails for cold rooms. Two years later, when the company moved to its current location, production increased even further with the addition of stainless steel trays and containers, work tops, shelving and other elements for furnishing butcher's shops and the like, where Lonatini can be considered a top ranking company and not only at a national level. Efficient sales organisation and skill are the result of the hard work that the six Lonatini brothers and their families have put in for 37 years, enabling the company to reach an ambitious target. In 2023 the company initially founded turns into S.R.L. administered and managed by the partner Lonatini Eugenio and his son Cristian Lonatini

Fabbrica ganci inox per macelleria e polleria, impianti di guidovie per celle frigorifere e mattatoi e tutto quanto riguarda l'arredamento per macellerie con vassoi e contenitori per banchi frigoriferi.

Manufacture of stainless steel hooks for meat and poultry shops, runway systems for cold rooms and slaughter houses, and all equipment for butchers' shops, including refrigerator trays and containers.



LONATINI S.R.L

Via Caduti, 34 - 25065 Lumezzane (BS) - Italia

REA C.C.I.A.A. BS 126.095 - Reg. Imp. BS/C.F. 00322170176

P. IVA IT00555170984 SDI: T04ZHR3

 lonatini@lonatini.com • lonatini@legalmail.it  www.lonatini.com

 Tel.: +39 030 8970751  +39 320 483 7842